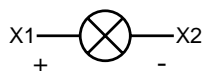




Blocchetti portalampana
Lampholders



gr. 16

ALIMENTAZIONE DIRETTA / DIRECT SUPPLY \sim ----
IEC: BA9S 380V. max 2W ESCLUSA/EXCLUDED*
UL - CSA: BA9S 250V. max 2W ESCLUSA/EXCLUDED

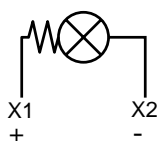
● 020PD9

gr. 34

RESISTORE PER LAMPADE A FILAMENTO \sim ----
RESISTOR FOR FILAMENT BULB

solo per impiego con utità liminose / only for illuminated lens
110÷125V. BA9S 60V. 1,2W INCLUSA/INCLUDED*
110÷125V. BA9S 48V. 2W INCLUSA/INCLUDED⁽¹⁾
220÷240V. BA9S 60V. 1,2W INCLUSA/INCLUDED

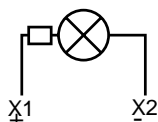
020PR19
020PR1E9
020PR29



RESISTORE PER LAMPADE MULTILED 48V \sim ---- (2)
RESISTOR FOR MULTILED BULB

solo per impiego con utità liminose / only for illuminated lens
110÷125V. BA9SL 48V. 16mA ESCLUSA/EXCLUDED
220÷240V. BA9SL 48V. 16mA ESCLUSA/EXCLUDED

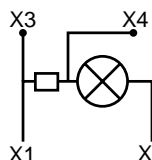
020PR19L
020PR29L



gr. 32

LAMPEGGIANTE ALIMENTAZIONE DIRETTA
FLASHING WITH DIRECT SUPPLY
6-24 V max 125mA lampada esclusa/excluded lamp

020PL9



gr. 32

MULTIFUNZIONE ALIMENTAZIONE DIRETTA⁽³⁾
MULTIFUNCTION DIRECT SUPPLY⁽³⁾
6V. 0,6W ÷ 24V. 3W ESCLUSA/EXCLUDED

020PDL9

X3 ——— X4

LUCE FISSA/FIXED LIGHT

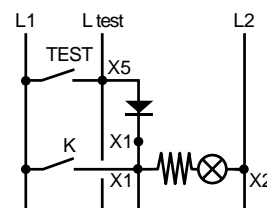
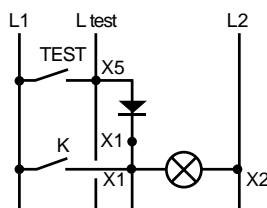
X3 ——— X4

LUCE LAMPEGGIANTE/FLASHING LIGHT

gr. 32

ELEMENTO TEST PROVALAMPADA⁽⁴⁾
BULB TEST ELEMENT⁽⁴⁾

▲ 020ET



(1) Versione secondo normativa ENEL.

(2) Abbinare lampada multiled 48V del colore desiderato (pag. 39).

(3) Collegare a contatto remoto per realizzazione luce fissa o lampeggiante.

(4) Per il controllo disaccoppiato di funzione per lampade a filamento.

(1) Version in conformity with ENEL Standard

(2) Match multiled 48V bulb of required colour (page 39).

(3) Connect to remote contact for fixed or flashing light.

(4) For unmatched filament bulb check.

*valori certificati IMQ/Certified values IMQ