

NEW!

Secure remote access
via the Theben cloud!

Simply smart. Simply LUXOR.
The LUXORliving smart home system.





LUXORliving controls your building. The LUXORliving smart home system.

LUXORliving is the intuitive smart home system from Theben that offers all-round home comfort and does not overwhelm users with unnecessary functions. LUXORliving controls everything that matters: Switching lights on and off. Dimming. Regulating the heating and blinds. And the best thing: LUXORliving is so easy to assemble, install and use that you don't need a specialised fitter – unless you really want one! Simply wonderful. Simply LUXORliving.



LUXORplug and LUXORplay
for start-up and operation

Those who want to feel safe can rely on LUXORliving.
The smart choice for houses, flats,
villas, doctor's surgeries and offices.



Highlights

Easy to use
Page 04-05

iON push-button
Page 06-07

Always there when you need it
Page 08-09

Be on the safe side
Page 10-11

Perfectly dimmed
Page 12-13

Smart cosy warmth
Page 14-15

Retrofitting and more
Page 16-17

Our cooperation partners
Page 18-19

Installation, product overview
Page 20-23

Be on the safe side.
LUXORliving is VDE-certified.



Our home is more than just a roof over our heads. It is somewhere where we want to feel safe and secure. LUXORliving helps to give you this feeling right across the board.

This is also certified by the VDE Institute, which has awarded LUXORliving the seal for "verified information security" after thorough testing.
Be on the safe side.



Super simple to operate. Programme your comfort.

LUXORliving – easy to use

Smart home system – it sounds like complicated programming and time-consuming training to use all the functions. This is not the case with LUXORliving. LUXORliving is the smart home system that is self-explanatory. It is easy to use and fun to try out all the functions. This isn't just true for residents – the installer will also find installing, programming and starting up the system a piece of cake.



LUXORplug for start-up

**Easy to set up –
the installation interface
for Windows.**

LUXORplug is the simple setup software from Theben. Windows-based – quick, safe, simple. No prior knowledge necessary.

LUXORplay for operation

**Easy to control –
the user interface for
smartphones and tablets.**

LUXORplay is the app for convenient, reliable and extremely easy operation of LUXORliving via a smartphone or tablet (for Android or iOS).

Simple operation. Superb functionality.

NEW!

The new LUXORliving iON tactile sensors and room controllers are an excellent addition to the range of Theben binary inputs. iON tactile sensors are flexible and cut a stylish figure in every room thanks to their frameless design.

Configuration is carried out using the free LUXORplug operating software.

Colour LEDs signal the current status of the tactile sensor, allowing you to see the status of the outdoor light, for instance, without having to go outside. The brightness of the status LEDs adapts to the ambient light: if the room gets darker, the status LEDs are dimmed automatically, preventing disruptive light interference at night. During the day, the LEDs shine more brightly and are easy to see.



LUXORliving iON2

LUXORliving single tactile sensor with two operating points. Working together with heating actuator technology, the temperature sensor helps to regulate the room temperature.

- Switching and dimming of lights
- Control blinds
- Activate scenes
- Measure temperature
- Show status

LUXORliving iON4

LUXORliving double tactile sensor with four operating points. Working together with heating actuator technology, the temperature sensor helps to regulate the room temperature.

- Switching and dimming of lights
- Control blinds
- Activate scenes
- Measure temperature
- Control colours
- Show status

LUXORliving iON8

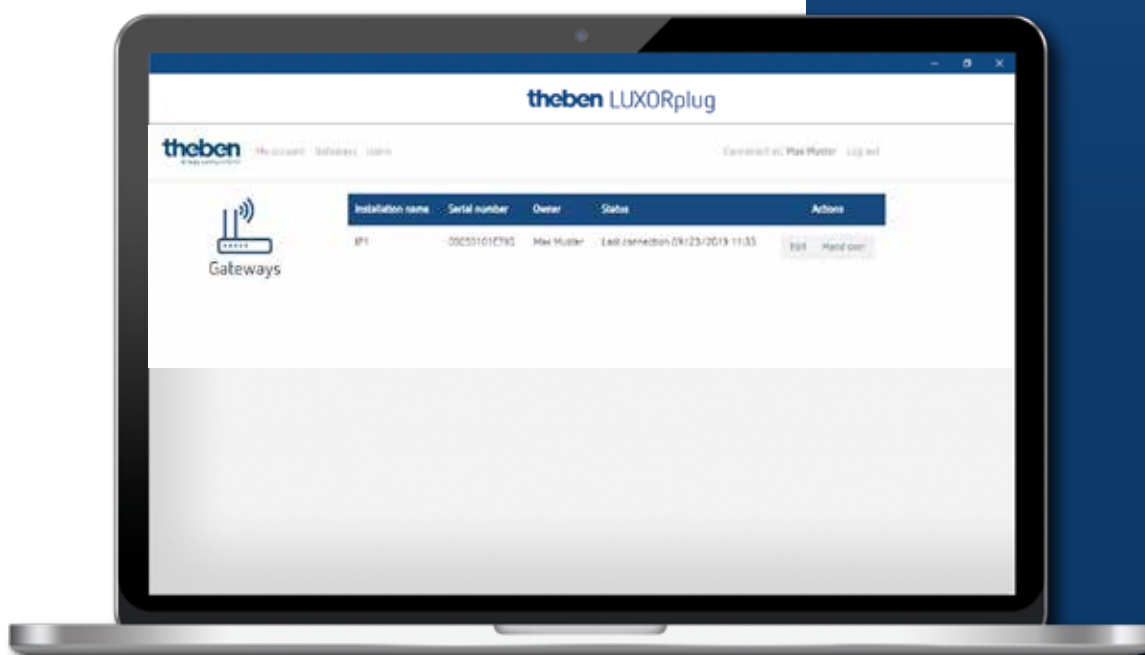
You can select a suitable icon for each of the 10 functions on the iON8 room controller from a library. The icon is supplemented with individual function names and the current status (on/off/dimming value/location). This makes the room controller easier to use and navigate. The brightness of the LCD display adjusts itself as required based on the surrounding brightness. If the room is dark, the backlight on the display is dimmed, preventing disruptive lighting effects. During the day, the display is brighter, so it is easy to read when there is a lot of ambient light.





Total control – easily online. Secure remote access via the Theben cloud.

The simple programming and operation of LUXORliving is hard to beat. Unless you also enable full online access. Welcome to the Theben cloud!



Practical: After registering to the Theben cloud, you can edit the names of your gateways or transfer the administration rights to additional users.



Always there for you no matter where you are.

The LUXORplay app allows you to control all functions and monitor statuses using remote access via the Theben cloud.

Access can be launched via the cloud and you can configure it easily in just a few clicks – without any network expertise required. Or simply leave everything to your installer.



Be on the safe side.

You can put your mind at ease with the Theben cloud thanks to its certified server location in Germany.

This means your LUXORliving smart home system is optimally protected against data theft and manipulation attempts.

Smart home? But secure!

The best protection with LUXORliving.

Presence simulation with LUXORliving

Sometimes you simply have to close the doors and leave everything behind. So it's great when everything continues in an orderly manner. Just how you want it. The presence simulation of LUXORliving makes sure that the lights come on and the blinds go down at the usual time every evening. Not everyone needs to know that you're not at home.



A comforting sense of security.

No panic with LUXORliving

It's good to know that everyone is safe and sound at home. With the panic function, LUXORliving plays a huge role in creating this sense of security, eliminating the thought of panic completely. Or at least it does for you personally – but not for those who want to catch you unawares. If there is the slightest disturbance or unexplained noise in front of, next to or behind the house, a command triggers the simultaneous activation of the building lighting and blinds. This drives away anyone who shouldn't be there. Even if it's only the neighbour's cat!



Always there for you

The LUXORliving presence simulation and the clever smart home system simulate presence while the occupants can enjoy their holiday with peace of mind.



Everything off. Perhaps the smartest function.

Central OFF function

It's the same old story: The car is packed, your family are waiting, but you just have to go through the house one last time to make sure everything is as it should be. And when you're done, you still have a nagging feeling that you've forgotten something. That feeling is now a thing of the past. With LUXORliving, you can relax as you close the door behind you. Simply press "Central OFF" and everything will turn off. From the TV to the iron.

Perfect night-time dimming. Dimmed linearly and in harmony.

Is there anything a child enjoys more than a good bedtime story to round off the day? With the day gradually turning to night and the tale imperceptibly becoming a dream. But most importantly, the light has to stay on – at least a little bit. Because most children find they can get to sleep better with a light turned on. As do many grown-ups. Provided that the light is dimmed gently. With LUXORliving, you can have the room light level as you need it to sleep. Or your children's rooms.



LUXORliving D4

The dimmers from Theben ensure that the level of brightness can be dimmed infinitely, while making sure that the light remains absolutely flicker-free. LED lamps that never fully go out are also a thing of the past with LUXORliving.





Infinite and flicker-free dimming

Have your lighting as bright or as dimmed as you like and to suit the situation. Whether radiantly bright for working in the kitchen, as an orientation light in the hallway or a sleeping aid for your little ones.



Ideal for
underfloor heating



Smart cosy warmth with a world premiere

For the first time, the new 6-way heating actuator allows you to control your underfloor heating via the LUXORplay app. With its integrated heating controller, the actuator enables reliable control of valves and pumps, and easy installation in to the heating circuit.

Simple surface mounting

Ideal for integration in to the under floor heating circuit.

Flexible usage

Switching (24 V) or continuous (0–10 V) control of actuators in the LUXOR-living smart home system with an additional switching contact for the heating circuit pump.

Smooth integration

With practical plug connections and enclosed housing.

NEW!

Expanding your smart home? No problem! LUXORliving flush-mounted actuators



With its new wireless actuators, Theben is offering a practical option for expanding an existing LUXORliving smart home system. These allow you to wirelessly integrate extensions such as conservatories easily into the existing wire-based system.

Thanks to the media coupler, you can easily connect wire-based and wirelessly controlled components together in the same network. Buttons, window contacts and temperature sensors can be directly incorporated via the inputs of the flush-mounted actuators. And if you want to implement a wire-based KNX installation in the future, you can still continue to use all your LUXORliving products. Without a doubt!

Exceptionally secure: The communication of the radio-controlled components is automatically encrypted. This means that there is no chance of data theft or manipulation attempts.



**Flush-mounted dimming actuator
LUXORliving D1 RF**

The universal dimmer not only stands out with its automatic load detection, but also with even and infinite dimming of LED lamps.



**Flush-mounted switch actuator
LUXORliving S1 RF**

The switch actuator with its NO contact, zero-cross switching and a high switching capacity is the flexible all-rounder for all kinds of applications.



**Flush mounted blind actuator
LUXORliving J1 RF**

The blind actuator is suitable for manual or automatic control of blinds, awnings and roller blinds without extensive cabling.



**Flush-mounted heating actuator
LUXORliving H1 RF**

The heating actuator is perfect for silent control of a valve drive. Thanks to the integrated temperature monitoring, it helps to ensure increased operating safety, e.g. in the event of overload.



**Flush-mounted button interface
LUXORliving T4 RF**

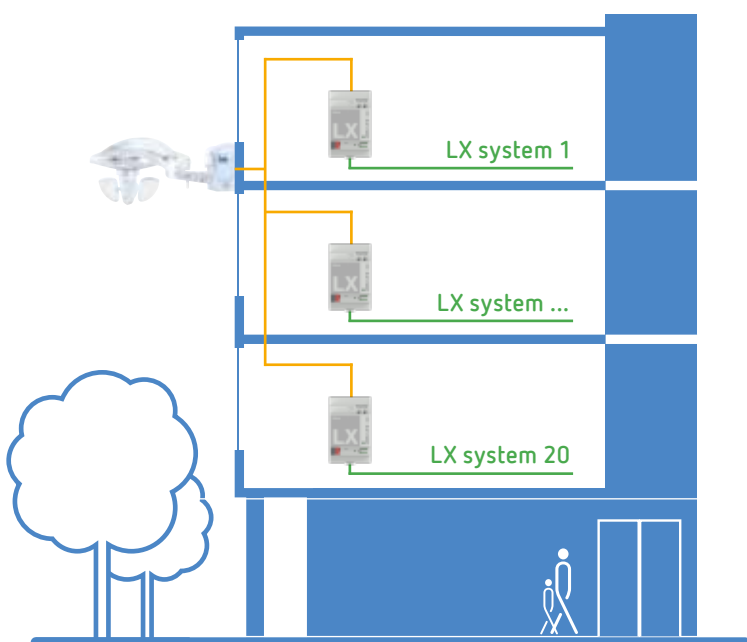
The button interface enables the integration of 4 conventional buttons and also offers an input for measuring the temperature. This 4-way button module (9070806) with the integrated temperature sensor can also be used as an alternative to conventional buttons.



The M140 weather station won't give you better weather, but it will make it easier for you to control your blinds and sun protection with LUXORliving. Completely automatically!

Let the weather work for you! With the LUXORliving weather station

NEW!



It's true that you can't change the weather. But you can use sunlight, wind, temperature and rain to control your blinds and sun protection via your LUXORliving smart home system. How does it work? It couldn't be simpler – with the LUXORliving M140 weather station from Theben.

The weather station brings down the blinds and lowers the room heating; for example, when there is direct sun radiation. Or it brings the blinds into a secure position during strong winds. And if it starts to rain, delicate textile hangings are automatically retracted. The weather station can also automatically open the hangings at dawn and close them when it gets dark in the evening as required.

One for all. Weather sensor and weather control centre for apartment buildings

With the new LUXORliving M100 weather sensor and the M130 weather control centre, you can cover multiple LUXORliving installations at the same time. The weather sensor provides information to the control centre. This means that up to 20 LUXORliving installations – for instance, in an apartment building – are provided with important weather information in one go, helping to lower appliance costs and reduce the installation time.



LUXORliving: the smart home system without limits.

When it comes to planning your home or office space, anyone opting for a smart home system expects one thing above all else: flexibility to accommodate changing needs in the future. Together with our partners, we are able to respond effectively and efficiently to new challenges on the market and our customers' required applications while continuously improving our LUXORliving solutions. That's why we've kept the configuration of our smart home system simple, so that you can enjoy a maximum range of functions.



No sooner said than done. Voice control via language assistant

The options for operating the functions are almost as varied as the LUXORliving system itself. Whether by button in situ, with the LUXORplay app or using the language assistant, LUXORliving carries out your every command.

By connecting the LUXORliving IP1 system control centre to the Theben cloud, the programmed functions can be transferred to the language assistant automatically. From Amazon Alexa to Google Assistant – the integration process is just as simple as LUXORliving itself. As well as controlling the individual LUXORliving functions, you can also interact with other smart home appliances connected to the language assistant.

Find out more at
www.amazon.co.uk/assistant.google.com

More functionality. Integrate components via iHaus

With simple installation, flexibility to accommodate changing needs at all times and countless combination options, LUXORliving can be integrated with and operated from the iHaus smart home platform. The VDE-certified system seamlessly integrates with other smart home appliances and systems via the iHaus app, including Philips Hue bulbs, IKEA Trådfri products, Apple HomeKit thermostats and outlets, Home Connect home appliances from Bosch & Siemens, Sonos speakers, Netatmo weather stations, iHaus dual alarm units and Tesla vehicles. The available LUXORliving configuration can be imported via plug & play and easily operated and networked via the iHaus app, meaning that users are well equipped for the future.

Find out more at
www.ihaus.com

Maximum security. Integrate alarm units via Ei Electronics

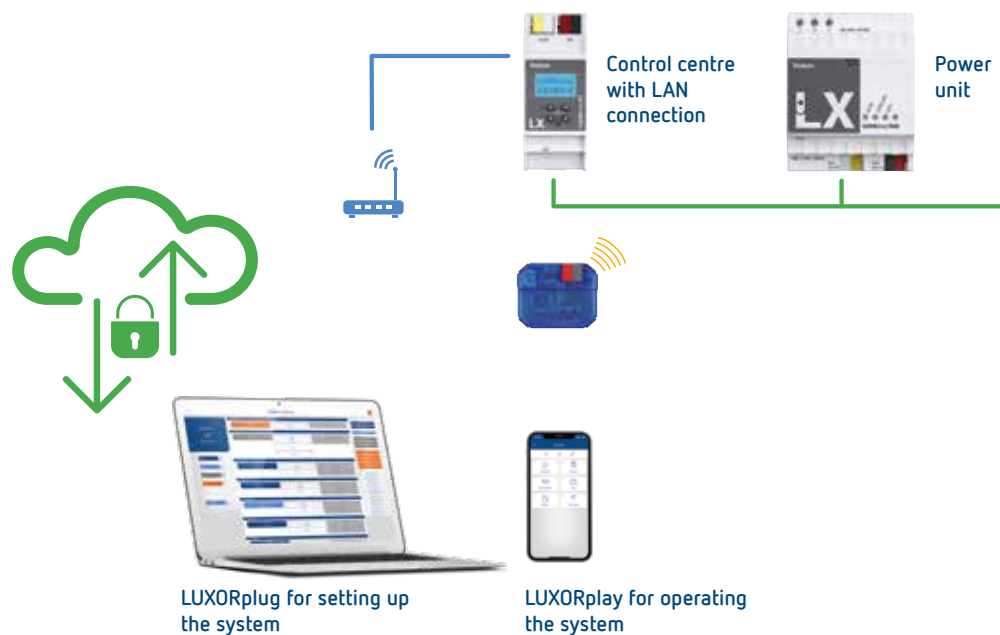
House fires or undetected carbon monoxide leaks can be fatal. That is why it is a particularly smart move to have smoke and carbon monoxide detectors integrated into your LUXORliving system. Thanks to the underlying mesh wireless networking, residents are warned of smoke and carbon monoxide quickly and reliably and can get themselves to safety in good time. For example, an alarm can cause blinds or roller blinds to be opened automatically to provide an escape route. There is also the option of switching on the lighting in certain areas to illuminate escape routes.

Find out more at
www.eielectronics.com

Simply flexible when it comes to setup.

LUXORliving – intuitive operation

Simply wire, set up, program and you're done. Or retrofit with wireless actuators. The visualisation is generated automatically. With LUXORplug, you can create the project file in an instant. Whether you are carrying out the installation at your office or directly on site, you have everything at your fingertips. And online via the Theben cloud, you have everything to hand with the LUXORplay app – total convenience on a smartphone or tablet.



Certified components

LUXORliving uses standard KNX communication, making it a secure investment that is fit for the future compared to proprietary systems. Updates ensure it is always at the cutting edge and the system is easy to extend if necessary. The show-stopper: LUXORliving has as much KNX as is needed and as little complexity as possible. That's what makes LUXORliving so incredibly simple. For the installer as well as for the user.



Simple start-up

You thought LUXOR was easy to install. LUXORliving is even easier. Easy to assemble, to wire and to set. Done. No ETS. No licence required. No prior knowledge either. Just go with your intuition – speedy, safe, successful.



Flexible BUS wiring

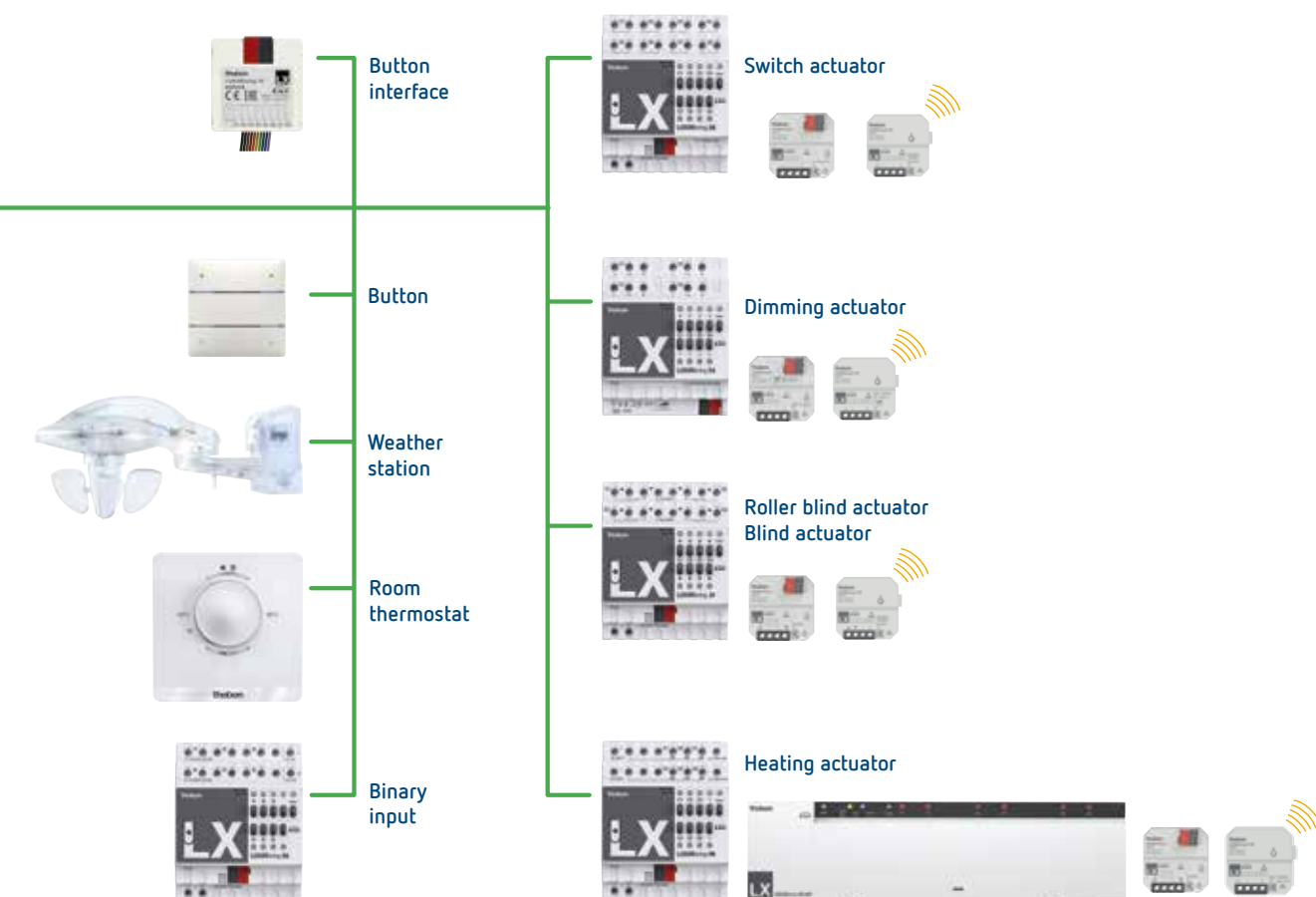
In conventional setups, the functions are preset and fixed through the wiring. This is not the case with LUXORliving. Based on flexible BUS wiring, lights, roller blinds or other applications can be assigned to the buttons as you wish. This gives you leeway to change existing installations and reduces costs as fewer switches are needed.

Super simple when it comes to installation.



Old friends – installation with LUXORliving

With LUXORliving, everything becomes much simpler. But some things, such as the installation process stay as simple as you've come to expect from Theben and LUXOR.



Free push button selection

With many smart home systems the buttons are preset. This is not the case with LUXORliving. With this system, homeowners can choose for themselves whether they use the LUXORliving iON button or any other conventional button in connection with our binary inputs and button interfaces.



Clever presence simulation

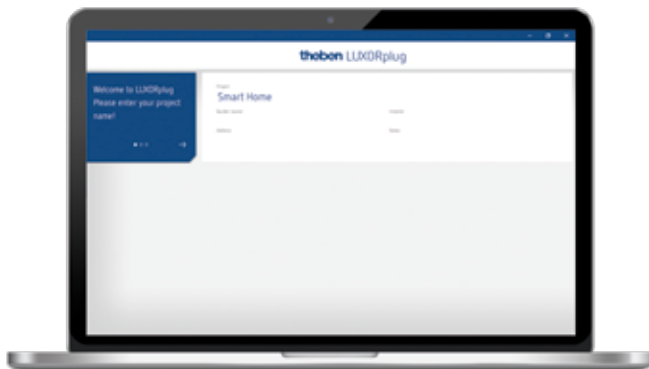
When the occupants are at home, they use LUXORliving. When they're not at home, LUXORliving is of use to them. The clever smart home system makes sure that the lights come on and the blinds go down every evening, while the occupants can enjoy their holiday without having to worry.



Individual scenarios

Lighting moods and blind positions can of course be programmed freely and can be activated with a command as required. This means that each individual can create the scenarios of their choice.

Easy to use. In 6 steps.



1. Start project

First, complete the formalities by entering all the relevant project information, such as the project name, builder, address and installer.



2. Create overview

Using drag & drop, you can add the rooms to the relevant floors and assign individual names.



3. Integrate devices

Devices that have already been installed can be imported, identified and named automatically. Or you can create the device list manually and offline.



4. Define functions

Use drag & drop to add functions to the devices in each room. This determines which devices communicate with each other.



5. Program functions

These functions can be transferred at any time. The project planning does not have to be completely finished to program the devices.



6. Prepare visualisation

The project file is transmitted to the system control centre. The functions are then extremely easy to operate and configure using the LUXORplay app.

LUXORliving.

The complete range.

Function	Channels	Type	Item no.	
Button interface	2	LUXORliving T2	4800402	NEW
	4	LUXORliving T4	4800404	
	4	LUXORliving T4 RF	4800604	
	8	LUXORliving T8	4800408	
Switch actuator	1	LUXORliving S1	4800520	
	1	LUXORliving S1 RF	4800620	
	4	LUXORliving S4	4800420	
	8	LUXORliving S8	4800425	
	16	LUXORliving S16	4800429	
Binary input	6	LUXORliving B6	4800430	
Heating actuator	1	LUXORliving H1	4800540	NEW
	1	LUXORliving H1 RF	4800640	
	6	LUXORliving H6 24 V	4800441	
	6	LUXORliving H6	4800440	
Blind actuator	1	LUXORliving J1	4800550	
	1	LUXORliving J1 RF	4800650	
	4	LUXORliving J4	4800450	
	8	LUXORliving J8	4800455	
Dimming actuator	1	LUXORliving D1	4800570	
	1	LUXORliving D1 RF	4800670	
	2	LUXORliving D2	4800470	
	4	LUXORliving D4	4800475	
Controls	-	LUXORliving R718	4800480	NEW
	2	LUXORliving iON2	4800412	
	4	LUXORliving iON4	4800414	
	10	LUXORliving iON8	4800418	
Weather station	-	LUXORliving M140	4800490	NEW
	-	LUXORliving M100	4800491	
	-	LUXORliving M130	4800492	
System control centre	-	LUXORliving IP1	4800495	
Power supply	-	LUXORliving P640	4800990	
Media coupler for RF devices	-	LUXORliving RF1	4800868	
Starter packages				
LUXORliving „Drives Basic“				NEW
1x system control centre LUXORliving IP1, 1x power supply LUXORliving P640, 1x blind actuator LUXORliving J8, 4x push button interface LUXORliving T4			4990013	
LUXORliving “Drives”				
1x system control centre LUXORliving IP1, 1x power supply LUXORliving P640, 1x weather station LUXORliving M140, 1x blind actuator LUXORliving J8, 2x push button interface LUXORliving T4			4990010	
LUXORliving “Lighting”				
1x system control centre LUXORliving IP1, 1x power supply LUXORliving P640, 1x switch actuator LUXORliving S8, 1x dimming actuator LUXORliving D4, 2x push button interface LUXORliving T4			4990011	
LUXORliving “Drives & Lighting”				
1x system control centre LUXORliving IP1, 1x power supply LUXORliving P640, 1x weather station LUXORliving M140, 1x switch actuator LUXORliving S8, 1x dimming actuator LUXORliving D4, 1x blind actuator LUXORliving J8, 4x push button interface LUXORliving T4			4990012	

www.LUXORliving.co.uk

Register now and experience simplicity.

Theben is a member of:



Follow Theben online:



theben

Theben AG
Hohenbergstraße 32
72401 Haigerloch, Germany
Phone +49 7474 692-0
Fax +49 7474 692-150
info@theben.de
www.theben.de/en

Service hotline
hotline@theben.de
+49 7474 692-369
Mo–Th 7:00–18:00, Fr 7:00–16:00

9900649 0620 Subject to technical changes and improvements.

