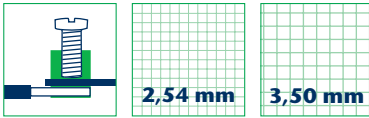
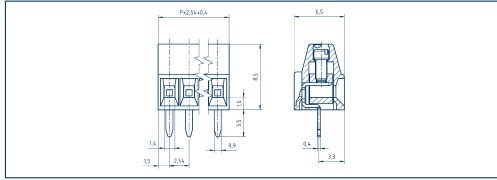


CONTA-CON
SUPPLEMENTS 2011

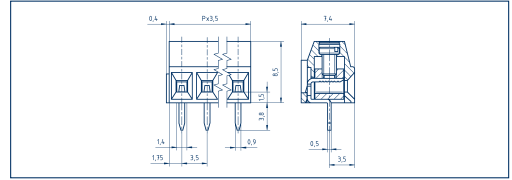
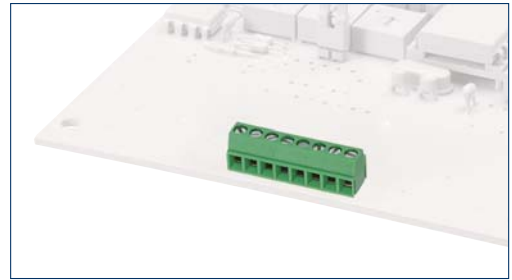
Terminals



PKZ 692/.../2,54-V



PKZ 601/.../3,5-V



Drawings

Connection principle

Dimensions

Spacing mm	2,54
Insulation stripping length mm	4,00
PCB hole diameter mm	1,30

Connection data

Single wire (solid) mm ²	0,14 - 0,75
Stranded wire (flexible) mm ²	0,14 - 0,75
Stranded wire (with ferrules) mm ²	0,14 - 0,34

Rating

Usegroup	B	C	D	VDE*
Rated voltage V	150	-	-	130
Rated current A	7	-	-	9
Overvoltage category	-	-	-	-
Cross section max. AWG/mm ²	30 - 18	-	-	0,75
Rated impulse voltage kV	1,3	-	-	1,5
Rated torque NM/Screw size	0,10 / M 1,6	-	-	0,10 / M 1,6
Contamination degree	-	-	-	-

Materials

Insulating material/Flammability class	PA 6.6 V0 / UL 94 V0
Temperature Range	-30°C / +105°C
Clamping part	CuZn
Screw	Steel
Clamping cage/Eccentric	-
Contact pin	-
Flange/threaded insert	-
Cage tension spring	-
Wire protection	-
Soldering lug	CuZn
Contact Spring	-

Order information

Standard colour(s)	No. of Poles	Cat.-Nr.	Qty.p.pck.
(further colours on request)	2	● (Ral 6018) 14100.1	50
	3	14101.1	50
	4	14102.1	50
	5	14103.1	50
	6	14104.1	50
	7	14105.1	50
	8	14106.1	50
	9	14107.1	50
	10	14108.1	50
	11	14109.1	50
	12	14110.1	50
	13	14111.1	50
	14	14112.1	50
	15	14113.1	50
	16	14114.1	50
	17	14115.1	50
	18	14117.1	50
	19	14118.1	50
	20	14119.1	50
	21	14120.1	50
	22	14121.1	50
	23	14122.1	50
	24	14123.1	50

Accessories

Marking

Strain-relief-clamp

Spacing mm	2,54
Insulation stripping length mm	4,00
PCB hole diameter mm	1,30

cULus*

Usegroup	B	C	D	VDE*
Rated voltage V	150	-	-	130
Rated current A	7	-	-	9
Overvoltage category	-	-	-	-
Cross section max. AWG/mm ²	30 - 18	-	-	0,75
Rated impulse voltage kV	1,3	-	-	1,5
Rated torque NM/Screw size	0,10 / M 1,6	-	-	0,10 / M 1,6
Contamination degree	-	-	-	-

Insulating material/Flammability class	PA 6.6 V0 / UL 94 V0
Temperature Range	-30°C / +105°C
Clamping part	CuZn
Screw	Steel
Clamping cage/Eccentric	-
Contact pin	-
Flange/threaded insert	-
Cage tension spring	-
Wire protection	-
Soldering lug	CuZn
Contact Spring	-

No. of Poles	Cat.-Nr.	Qty.p.pck.
2	● (Ral 6018) 14100.1	50
3	14101.1	50
4	14102.1	50
5	14103.1	50
6	14104.1	50
7	14105.1	50
8	14106.1	50
9	14107.1	50
10	14108.1	50
11	14109.1	50
12	14110.1	50
13	14111.1	50
14	14112.1	50
15	14113.1	50
16	14114.1	50
17	14115.1	50
18	14117.1	50
19	14118.1	50
20	14119.1	50
21	14120.1	50
22	14121.1	50
23	14122.1	50
24	14123.1	50

see on page 124 CONTA-CON catalogue

Strain-relief-clamp

Spacing mm	3,5
Insulation stripping length mm	6,0
PCB hole diameter mm	1,3

cULus*

Usegroup	B	C	D	VDE*
Rated voltage V	300	-	300	160
Rated current A	10	-	10	10
Overvoltage category	-	-	-	-
Cross section max. AWG/mm ²	28-16	-	28-16	1,00
Rated impulse voltage kV	1,6	-	1,6	2,5
Rated torque NM/Screw size	0,20 / M 2	-	0,20 / M 2	0,20 / M 2
Contamination degree	-	-	-	-

Insulating material/Flammability class	PA 6.6 V0 / UL 94 V0
Temperature Range	-30°C / +105°C
Clamping part	CuZn
Screw	Steel
Clamping cage/Eccentric	-
Contact pin	-
Flange/threaded insert	-
Cage tension spring	-
Wire protection	-
Soldering lug	CuZn
Contact Spring	-

No. of Poles	Cat.-Nr.	Qty.p.pck.
2	● (Ral 6018) 14123.1	50
3	14124.1	50
4	14125.1	50
5	14126.1	50
6	14127.1	50
7	14128.1	50
8	14129.1	50
9	14130.1	50
10	14131.1	50
11	14132.1	50
12	14133.1	50
13	14134.1	50
14	14135.1	50
15	14136.1	50
16	14137.1	50
17	14138.1	50
18	14139.1	50
19	14140.1	50
20	14141.1	50
21	14142.1	50
22	14143.1	50
23	14144.1	50
24	14145.1	50

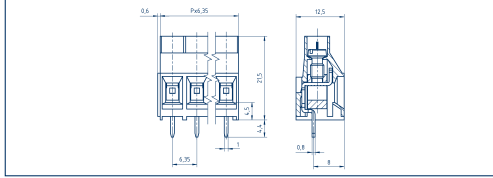
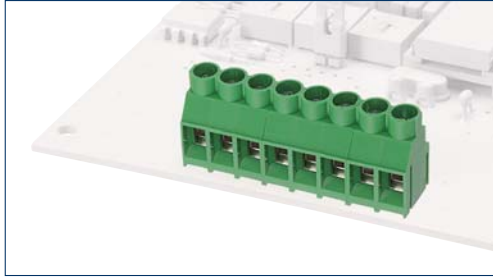
see on page 124 CONTA-CON catalogue

* Approvals have been applied for

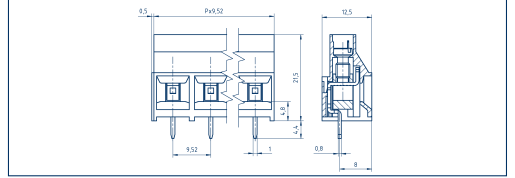
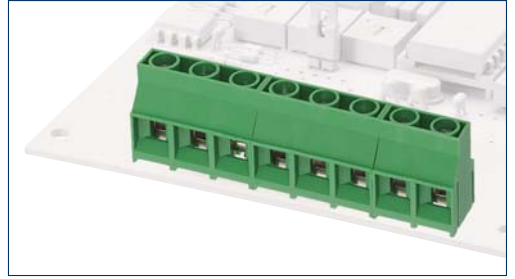
Terminals



PKZ 840/.../6,35-V



PKZ 841/.../9,52-V



Drawings

Connection principle

Dimensions

Spacing mm	6,35
Insulation stripping length mm	7,00
PCB hole diameter mm	1,60

Connection data

Single wire (solid) mm ²	0,20 - 6,00
Stranded wire (flexible) mm ²	0,20 - 4,00
Stranded wire (with ferrules) mm ²	0,25 - 4,00

Rating

	cULus*			VDE*
	B	C	D	
Usegroup	300	-	300	450
Rated voltage V	30	-	10	32
Rated current A	-	-	-	-
Overtoltage category	28 - 10	-	28 - 10	4,00
Cross section max. AWG/mm ²	1,6	-	1,6	6,0
Rated impulse voltage kV	0,80 / M 3,5	-	0,80 / M 3,5	0,80 / M 3,5
Rated torque NM/Screw size	-	-	-	-
Contamination degree	-	-	-	-

Materials

Insulating material/Flammability class	PA 6.6 V0 / UL 94 V0
Temperature Range	-30°C / +105°C
Clamping part	CuZn
Screw	Steel
Clamping cage/Eccentric	-
Contact pin	-
Flange/threaded insert	-
Cage tension spring	-
Wire protection	-
Soldering lug	CuZn
Contact Spring	-

Order information

	No. of Poles	Cat.-Nr.	Qty.p.pck.
Standard colour(s)		● (Ral 6018)	
(further colours on request)	2	10523.1	50
	3	10524.1	50
	4	10525.1	50
	5	10526.1	50
	6	10527.1	50
	7	10528.1	50
	8	10529.1	50
	9	10530.1	50
	10	10531.1	50
	11	10532.1	50
	12	10533.1	50
	13	12714.1	50
	14	12715.1	50
	15	12716.1	50
	16	12717.1	50

Accessories

Marking see on page 124 CONTA-CON catalogue

* Approvals have been applied for

Strain-relief-clamp

Spacing mm	9,52
Insulation stripping length mm	7,00
PCB hole diameter mm	1,60

Single wire (solid) mm ²	0,20 - 6,00
Stranded wire (flexible) mm ²	0,20 - 4,00
Stranded wire (with ferrules) mm ²	0,25 - 4,00

Rating

	cULus*			VDE*
	B	C	D	
Usegroup	600	-	600	1000
Rated voltage V	30	-	5	32
Rated current A	-	-	-	-
Overtoltage category	28 - 10	-	28 - 10	4,00
Cross section max. AWG/mm ²	2,2	-	2,2	3,5
Rated impulse voltage kV	0,80 / M 3,5	-	0,80 / M 3,5	0,80 / M 3,5
Rated torque NM/Screw size	-	-	-	-
Contamination degree	-	-	-	-

Materials

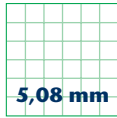
Insulating material/Flammability class	PA 6.6 V0 / UL 94 V0
Temperature Range	-30°C / +105°C
Clamping part	CuZn
Screw	Steel
Clamping cage/Eccentric	-
Contact pin	-
Flange/threaded insert	-
Cage tension spring	-
Wire protection	-
Soldering lug	CuZn
Contact Spring	-

	No. of Poles	Cat.-Nr.	Qty.p.pck.
Standard colour(s)		● (Ral 6018)	
(further colours on request)	2	10534.1	50
	3	10535.1	50
	4	10536.1	50
	5	10537.1	50
	6	10538.1	50
	7	10539.1	50
	8	10540.1	50
	9	10541.1	50
	10	10542.1	50
	11	10543.1	50
	12	10544.1	50
	13	12726.1	50
	14	12727.1	50
	15	12728.1	50
	16	12729.1	50

see on page 124 CONTA-CON catalogue

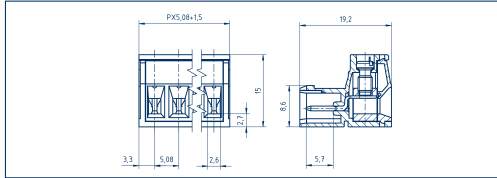
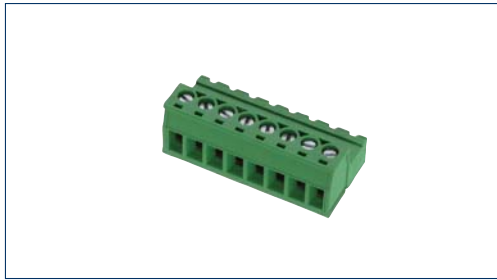
P.C. board plug-in connectors

Connector

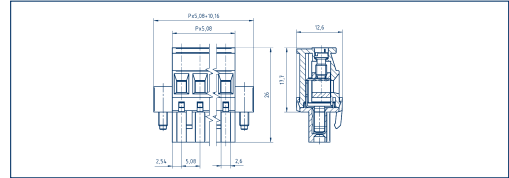


5,08 mm

IPKBZ 950/.../5,08



PKBZ 1100/.../5,08-F



Drawings

Connection principle

Dimensions

Spacing mm

Insulation stripping length mm

PCB hole diameter mm

Connection data

Single wire (solid) mm²

Stranded wire (flexible) mm²

Stranded wire (with ferrules) mm²

Rating

Usegroup

Rated voltage V

Rated current A

Overvoltage category

Cross section max. AWG/mm²

Rated impulse voltage kV

Rated torque NM/Screw size

Contamination degree

Materials

Insulating material/Flammability class

Temperature Range

Clamping part

Screw

Clamping cage/Eccentric

Contact pin

Flange/threaded insert

Cage tension spring

Wire protection

Soldering lug

Contact Spring

Order information

Standard colour(s)

(further colours on request)

Strain-relief-clamp

5,08

7,00

-

0,20 - 4,00

0,20 - 4,00

0,25 - 2,50

cULus*			VDE*
B	C	D	
300	-	300	250
10	-	10	10
-	-	-	III
28 - 12	-	28 - 12	2,50
1,6	-	1,6	4,0
0,55 / M 3	-	0,55 / M 3	0,55 / M 3
-	-	-	3

Strain-relief-clamp

5,08

7,00

-

0,20 - 4,00

0,20 - 4,00

0,25 - 2,50

cULus*			VDE*
B	C	D	
300	-	300	250
11	-	10	12
-	-	-	III
28 - 12	-	28 - 12	2,50
1,6	-	1,6	4,0
0,50 / M 3	-	0,50 / M 3	0,50 / M 3
-	-	-	3

PA 6.6 V0 / UL 94 V0

-30°C / +105°C

CuZn

Steel

-

-

-

-

-

-

CuSn

No. of Poles	Cat.-Nr.	Qty.p.pck.
	● (Ral 6018)	
2	14196.1	50
3	14197.1	50
4	14198.1	50
5	14199.1	50
6	14200.1	50
7	14201.1	50
8	14202.1	50
9	14203.1	50
10	14204.1	50
11	14205.1	50
12	14206.1	50
13	14207.1	50
14	14208.1	50
15	14209.1	50
16	14210.1	50
17	14211.1	50
18	14212.1	50
19	14213.1	50
20	14214.1	50
21	14215.1	50
22	14216.1	50
23	14217.1	50
24	14218.1	50

ISTLZ 950/.../5,08-H; ISTLZ 950/.../5,08-V; PKB 950/.../5,08; PKB 1100/.../5,08; PKB 1110/.../5,08

No. of Poles	Cat.-Nr.	Qty.p.pck.
	● (Ral 6018)	
2	14219.1	50
3	14220.1	50
4	14221.1	50
5	14222.1	50
6	14223.1	50
7	14224.1	50
8	14225.1	50
9	14226.1	50
10	14227.1	50
11	14228.1	50
12	14229.1	50
13	14230.1	50
14	14231.1	50
15	14232.1	50
16	14233.1	50
17	14234.1	50
18	14235.1	50
19	14236.1	50
20	14237.1	50
21	14238.1	50
22	14239.1	50
23	14240.1	50
24	14241.1	50

STL 950/.../5,08-H-F; STL 950/.../5,08-V-F

Accessories

Marking

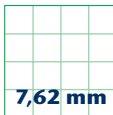
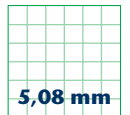
Coding

Best.-Nr.	VPE
see on page 124 CONTA-CON catalogue	
K5 RD	14310.4
	100

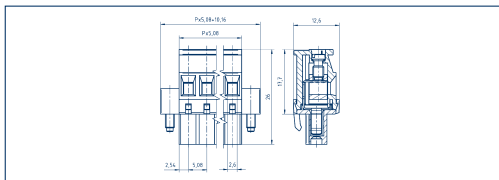
Best.-Nr.	VPE
see on page 124 CONTA-CON catalogue	
K4 RD	14309.4
	100

P.C. board plug-in connectors

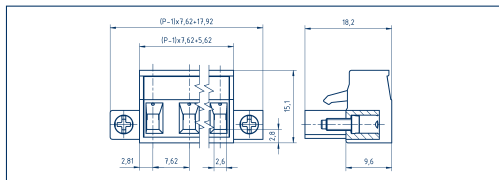
Connector



PKBZ 1110/.../5,08-F



PKBZ 965/.../7,62-F



Drawings

Connection principle

Dimensions

Spacing mm	5,08
Insulation stripping length mm	7,00
PCB hole diameter mm	-

Connection data

Single wire (solid) mm ²	0,20 - 4,00
Stranded wire (flexible) mm ²	0,20 - 4,00
Stranded wire (with ferrules) mm ²	0,25 - 2,50

Rating

	cULus*			VDE*
	B	C	D	
Usegroup	300	-	300	250
Rated voltage V	11	-	10	12
Rated current A	-	-	-	III
Overtoltage category	28 - 12	-	28 - 12	2,50
Cross section max. AWG/mm ²	1,6	-	1,6	4,0
Rated impulse voltage kV	0,50 / M 3	-	0,50 / M 3	0,50 / M 3
Rated torque NM/Screw size	-	-	-	3

Materials

Insulating material/Flammability class	PA 6.6 V0 / UL 94 V0			
Temperature Range	-30°C / +105°C			
Clamping part	CuZn			
Screw	Steel			
Clamping cage/Eccentric	-			
Contact pin	-			
Flange/threaded insert	-			
Cage tension spring	-			
Wire protection	-			
Soldering lug	-			
Contact Spring	CuSn			

Order information

	No. of Poles	Cat.-Nr.	Qty.p.pck.
Standard colour(s)		● (Ral 6018)	
(further colours on request)	2	14311.1	50
	3	14312.1	50
	4	14313.1	50
	5	14314.1	50
	6	14315.1	50
	7	14316.1	50
	8	14317.1	50
	9	14318.1	50
	10	14319.1	50
	11	14320.1	50
	12	14321.1	50
	13	14322.1	50
	14	14323.1	50
	15	14324.1	50
	16	14325.1	50
	17	14326.1	50
	18	14327.1	50
	19	14328.1	50
	20	14329.1	50
	21	14330.1	50
	22	14331.1	50
	23	14332.1	50
	24	14333.1	50

Matching counterparts

STL 950/.../5,08-H-F; STL 950/.../5,08-V-F

Accessories

	Best.-Nr.	VPE
Marking	see on page 124 CONTA-CON catalogue	
Coding	K4 RD 14309.4	100

Strain-relief-clamp

Spacing mm	7,62
Insulation stripping length mm	7,00
PCB hole diameter mm	-

Connection data

Single wire (solid) mm ²	0,08 - 4,00
Stranded wire (flexible) mm ²	0,08 - 4,00
Stranded wire (with ferrules) mm ²	0,25 - 2,50

Rating

	cULus*			VDE*
	B	C	D	
Usegroup	300	-	300	400
Rated voltage V	10	-	10	12
Rated current A	-	-	-	III
Overtoltage category	28 - 12	-	28 - 12	2,50
Cross section max. AWG/mm ²	1,6	-	1,6	6,0
Rated impulse voltage kV	0,50 / M 3	-	0,50 / M 3	0,50 / M 3
Rated torque NM/Screw size	-	-	-	3

Materials

Insulating material/Flammability class	PA 6.6 V0 / UL 94 V0			
Temperature Range	-30°C / +105°C			
Clamping part	CuZn			
Screw	Steel			
Clamping cage/Eccentric	-			
Contact pin	-			
Flange/threaded insert	-			
Cage tension spring	-			
Wire protection	-			
Soldering lug	-			
Contact Spring	CuSn			

Order information

	No. of Poles	Cat.-Nr.	Qty.p.pck.
Standard colour(s)		● (Ral 6018)	
(further colours on request)	2	14294.1	50
	3	14295.1	50
	4	14296.1	50
	5	14297.1	50
	6	14298.1	50
	7	14299.1	50
	8	14300.1	50
	9	14301.1	50
	10	14302.1	50
	11	14303.1	50
	12	14304.1	50
	13	14305.1	50
	14	14306.1	50
	15	14307.1	50
	16	14308.1	50

Matching counterparts

STL 960/.../7,62-H-F; STL 960/.../7,62-V-F

Accessories

	Best.-Nr.	VPE
Marking	see on page 124 CONTA-CON catalogue	
Coding	K4 RD 14309.4	100

* Approvals have been applied for

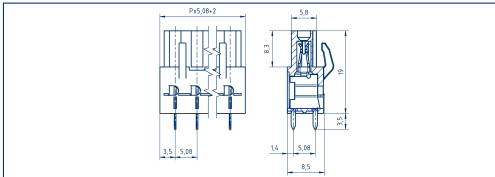
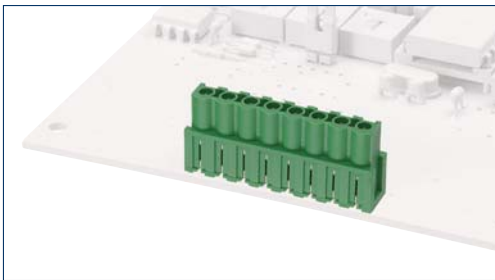
P.C. board plug-in connectors

Header

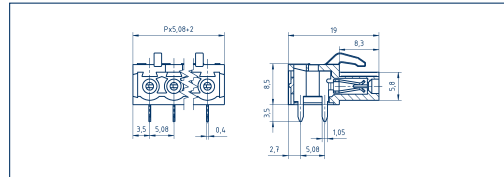
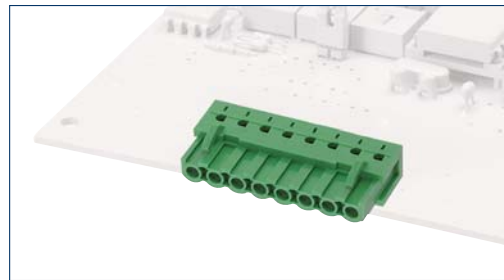


5,08 mm

ISTLZ 950/.../5,08-V



ISTLZ 950/.../5,08-H



Drawings

Connection principle

Dimensions

Spacing mm

5,08

Insulation stripping length mm

-

PCB hole diameter mm

1,40

Connection data

Single wire (solid) mm²

-

Stranded wire (flexible) mm²

-

Stranded wire (with ferrules) mm²

-

Rating

Usegroup

cULus*

VDE*

Rated voltage V

B 300 C - D 300

250

Rated current A

10 - 10

12

Overvoltage category

- - -

III

Cross section max. AWG/mm²

- - -

-

Rated impulse voltage kV

1,6 - 1,6

4,0

Rated torque NM/Screw size

- - -

-

Contamination degree

- - -

3

Materials

Insulating material/Flammability class

PA 6.6 V0 / UL 94 V0

PA 6.6 V0 / UL 94 V0

Temperature Range

-30°C / +105°C

-30°C / +105°C

Clamping part

-

-

Screw

-

-

Clamping cage/Eccentric

-

-

Contact pin

CuZn

CuZn

Flange/threaded insert

-

-

Cage tension spring

-

-

Wire protection

-

-

Soldering lug

-

-

Contact Spring

-

-

Order information

Standard colour(s)

No. of Poles

Cat.-Nr.

Qty.p.pck.

No. of Poles

Cat.-Nr.

Qty.p.pck.

(further colours on request)

2	● (Ral 6018)	14173.1	50
3		14174.1	50
4		14175.1	50
5		14176.1	50
6		14177.1	50
7		14178.1	50
8		14179.1	50
9		14180.1	50
10		14181.1	50
11		14182.1	50
12		14183.1	50
13		14184.1	50
14		14185.1	50
15		14186.1	50
16		14187.1	50
17		14188.1	50
18		14189.1	50
19		14190.1	50
20		14191.1	50
21		14192.1	50
22		14193.1	50
23		14194.1	50
24		14195.1	50

Matching counterparts

(Spacing 5,08 mm)

IPKBZ 950/.../5,08; STL 950/.../5,08-H;
STL 950/.../5,08-V

IPKBZ 950/.../5,08; STL 950/.../5,08-H;
STL 950/.../5,08-V

Accessories

Marking

Best.-Nr.

VPE

Coding

see on page 124 CONTA-CON catalogue

K4 RD

14309.4

100

Best.-Nr.

VPE

see on page 124 CONTA-CON catalogue

K4 RD

14309.4

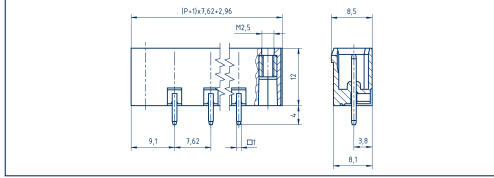
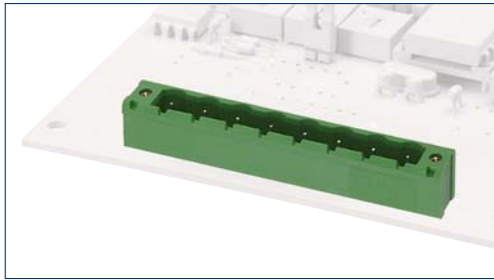
100

P.C. board plug-in connectors

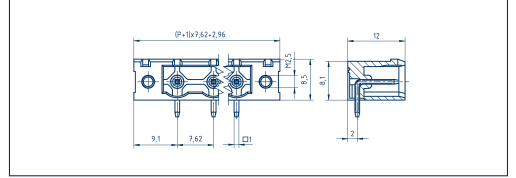
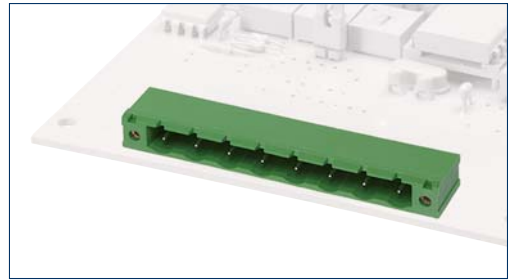
Header

7,62 mm

STLZ 965/.../7,62 V-F



STLZ 965/.../7,62 H-F



Drawings

Connection principle

Dimensions

Spacing mm

7,62

Insulation stripping length mm

-

PCB hole diameter mm

1,60

Connection data

Single wire (solid) mm²

-

Stranded wire (flexible) mm²

-

Stranded wire (with ferrules) mm²

-

Rating

Usegroup

cULus*			VDE*
B	C	D	
300	-	300	400

Rated voltage V

300

-

300

400

Rated current A

10

-

10

12

Overtoltage category

-

-

-

III

Cross section max. AWG/mm²

28 - 12

-

28 - 12

2,50

Rated impulse voltage kV

1,6

-

1,6

6,0

Rated torque NM/Screw size

-

-

-

-

Contamination degree

-

-

3

3

Materials

Insulating material/Flammability class

PA 6.6 V0 / UL 94 V0

Temperature Range

-30°C / +105°C

Clamping part

-

Screw

-

Clamping cage/Eccentric

-

Contact pin

CuZn

Flange/threaded insert

CuZn

Cage tension spring

-

Wire protection

-

Soldering lug

-

Contact Spring

-

Order information

Standard colour(s)

No. of Poles	Cat.-Nr.	Qty.p.pck.
	● (Ral 6018)	

(further colours on request)

2	14279.1	50
3	14280.1	50
4	14281.1	50
5	14282.1	50
6	14283.1	50
7	14284.1	50
8	14285.1	50
9	14286.1	50
10	14287.1	50
11	14288.1	50
12	14289.1	50
13	14290.1	50
14	14291.1	50
15	14292.1	50
16	14293.1	50

No. of Poles

● (Ral 6018)

No. of Poles	Cat.-Nr.	Qty.p.pck.
2	14264.1	50
3	14265.1	50
4	14266.1	50
5	14267.1	50
6	14268.1	50
7	14269.1	50
8	14270.1	50
9	14271.1	50
10	14272.1	50
11	14273.1	50
12	14274.1	50
13	14275.1	50
14	14276.1	50
15	14277.1	50
16	14278.1	50

Matching counterparts

(Spacing 5,08 mm)

PKBZ 965/.../7,62-F

PKBZ 965/.../7,62-F

Accessories

Marking

Best.-Nr.	VPE
see on page 124 CONTA-CON catalogue	

Coding

K5 RD	14310.4	100
-------	---------	-----

Best.-Nr.

see on page 124 CONTA-CON catalogue

K5 RD	14310.4	100
-------	---------	-----

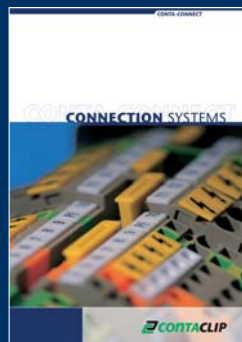
* Approvals have been applied for



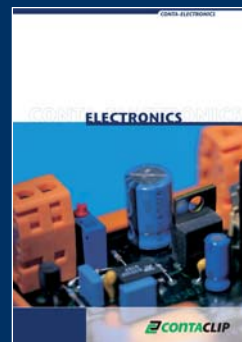
This product information contains additions to our **PCB** connector product portfolio.

For the entire product range, please see our main catalogue **CONTA-CON**, or look in the internet under www.conta-clip.com.

CONTA-CONNECT
[Connection Systems]



CONTA-ELECTRONICS
[Electronics]



CONTA-CON
[P.C. Board Connectors]

